



# Internal Parasites

---

What's lurking inside  
your pets?



# Why do we ask for your pet's stool sample?

Even though we don't always see worms in our pet's stool, it doesn't mean they aren't there. Most internal parasites are microscopic.

The adult worms live within the intestines and the eggs are shed in feces. The presence of eggs helps us diagnose and treat your pets.



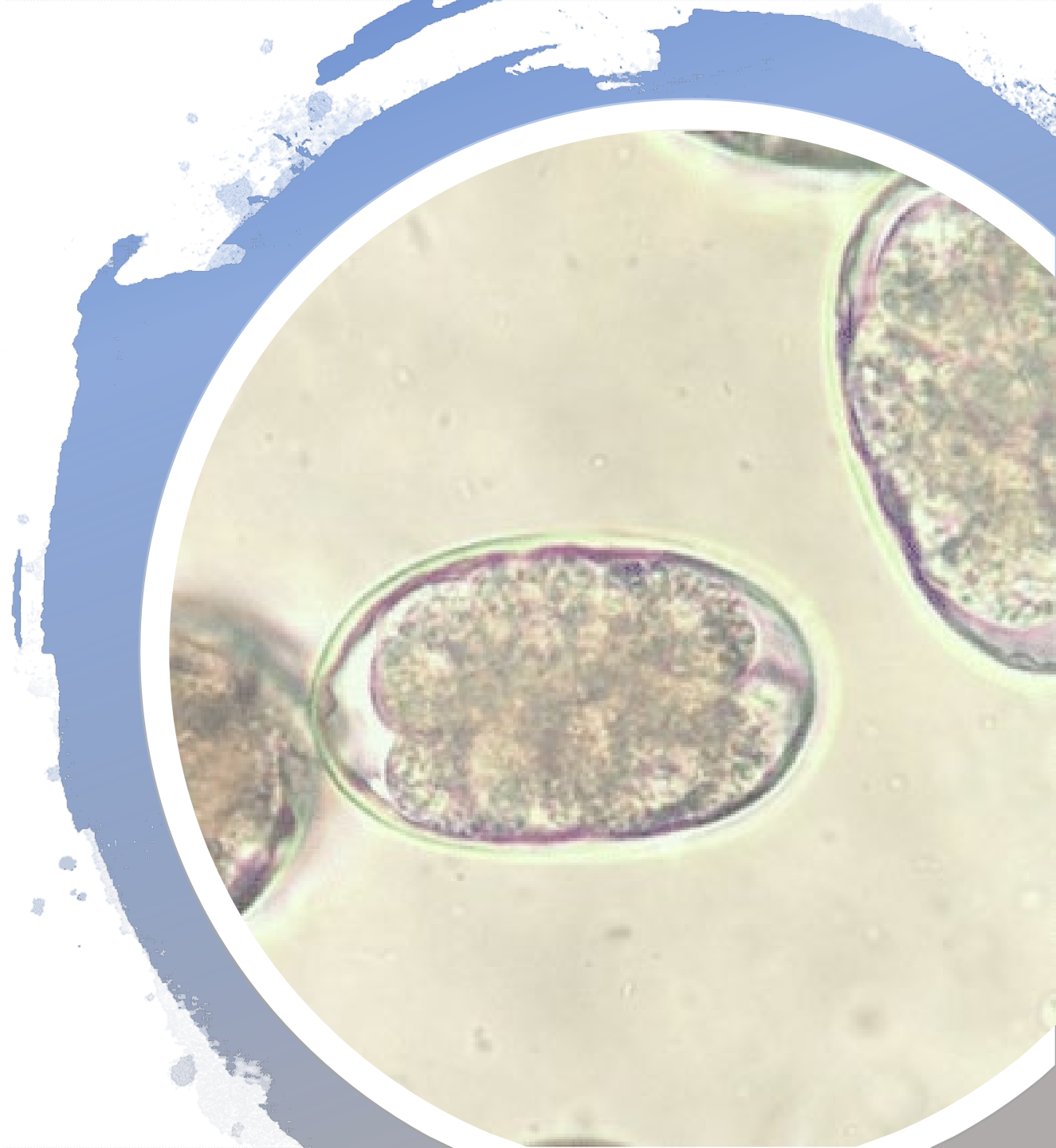
# Hookworms

**Host:** Dogs and cats

**Zoonosis potential:** Yes. Usually skin surface

**Signs:** Vomiting, diarrhea, pale gums/skin, lethargy

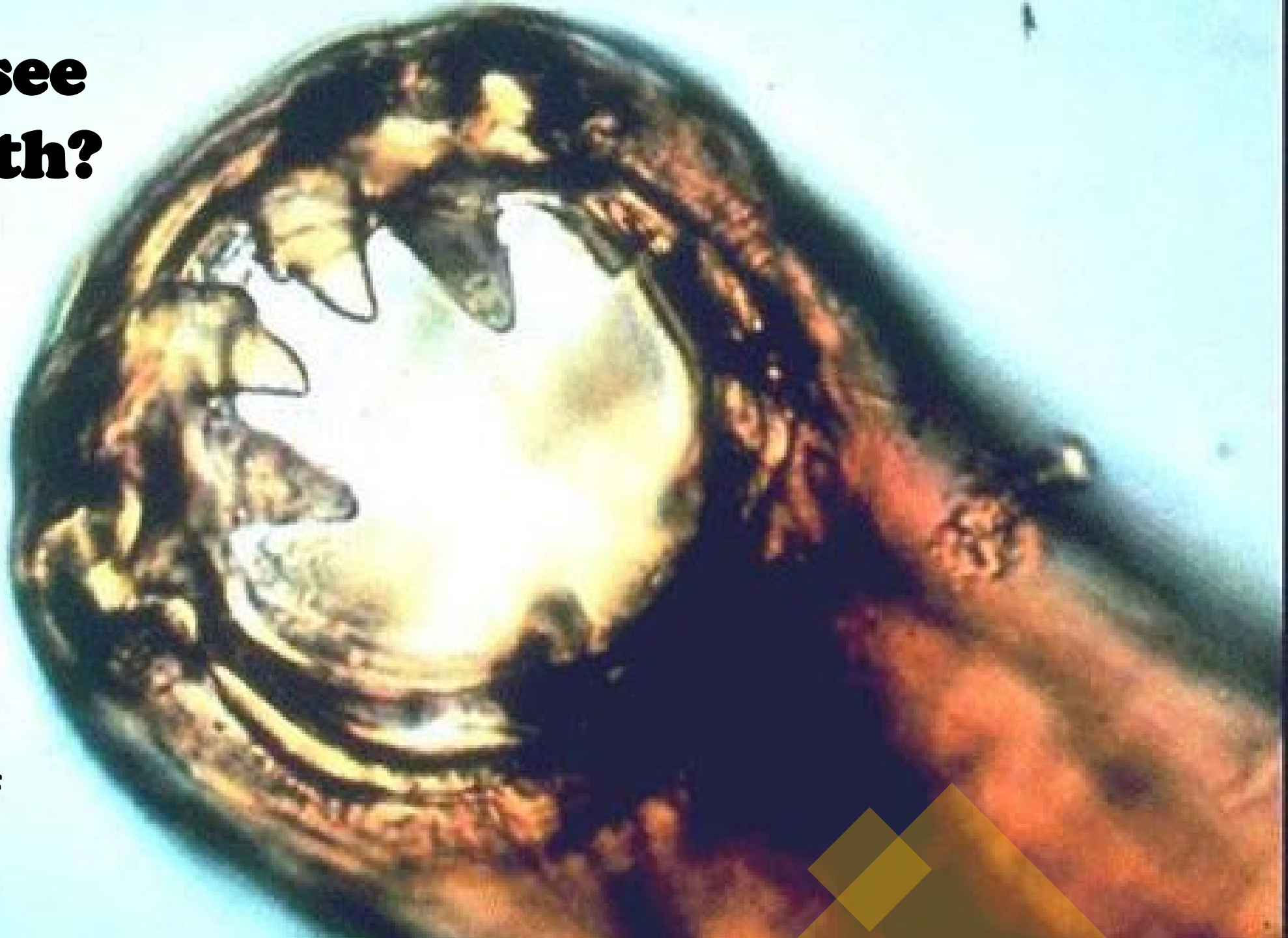
- Common in puppies and kittens. Adult worms live in the small intestine of its host and eggs are shed in the feces.
- Once a dog or cat becomes infected, it will take 2-4 weeks for eggs to be detected in a fecal sample.
- Adult worms attach to intestines leaving behind bleeding lesions. This can cause anemia.



# Did you see those teeth?

These are adult hookworms. They latch onto the walls of the intestines using their curved teeth; drinking their host's blood. Their saliva has an anticoagulant. When they detach from their host, the wound keeps bleeding. This causes the host to become anemic.

The **vampire** of parasites.

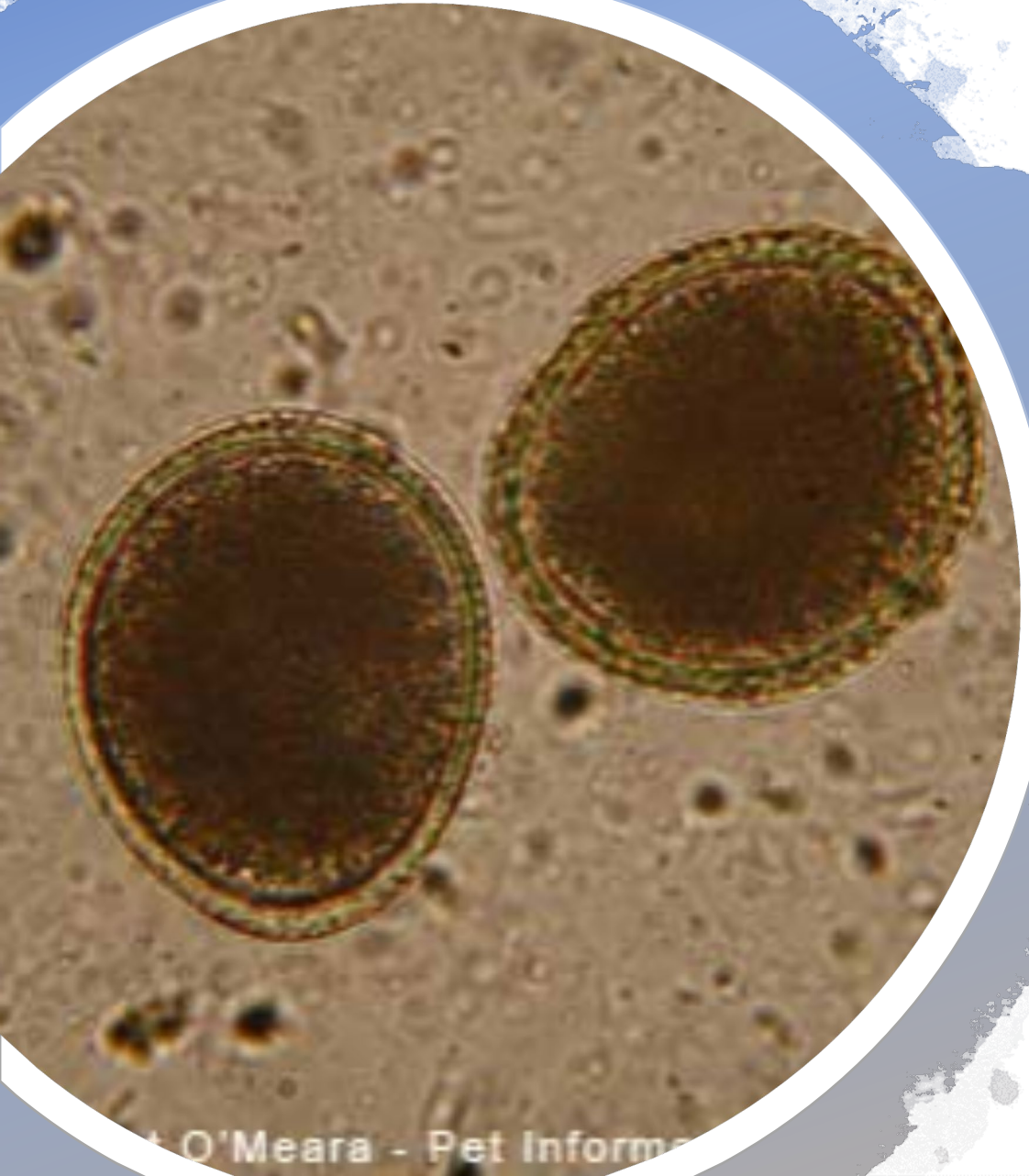


# Roundworms

**Host:** Dogs and cats

**Zoonosis potential:** Yes. Usually eyes and other organs

**Signs:** Vomiting, diarrhea, pot-bellied appearance



- Common in puppies and kittens. Adult worms live in the small intestine of its host and eggs are shed in the feces.
- Once a dog or cat becomes infected, it will take 2-4 weeks for eggs to be detected in a fecal sample.
- Adult worms can be visible in feces and vomit.



—

## **Those aren't spaghetti noodles!**

These are adult roundworms. They are not microscopic, and you can see them in your pet's feces or vomit.

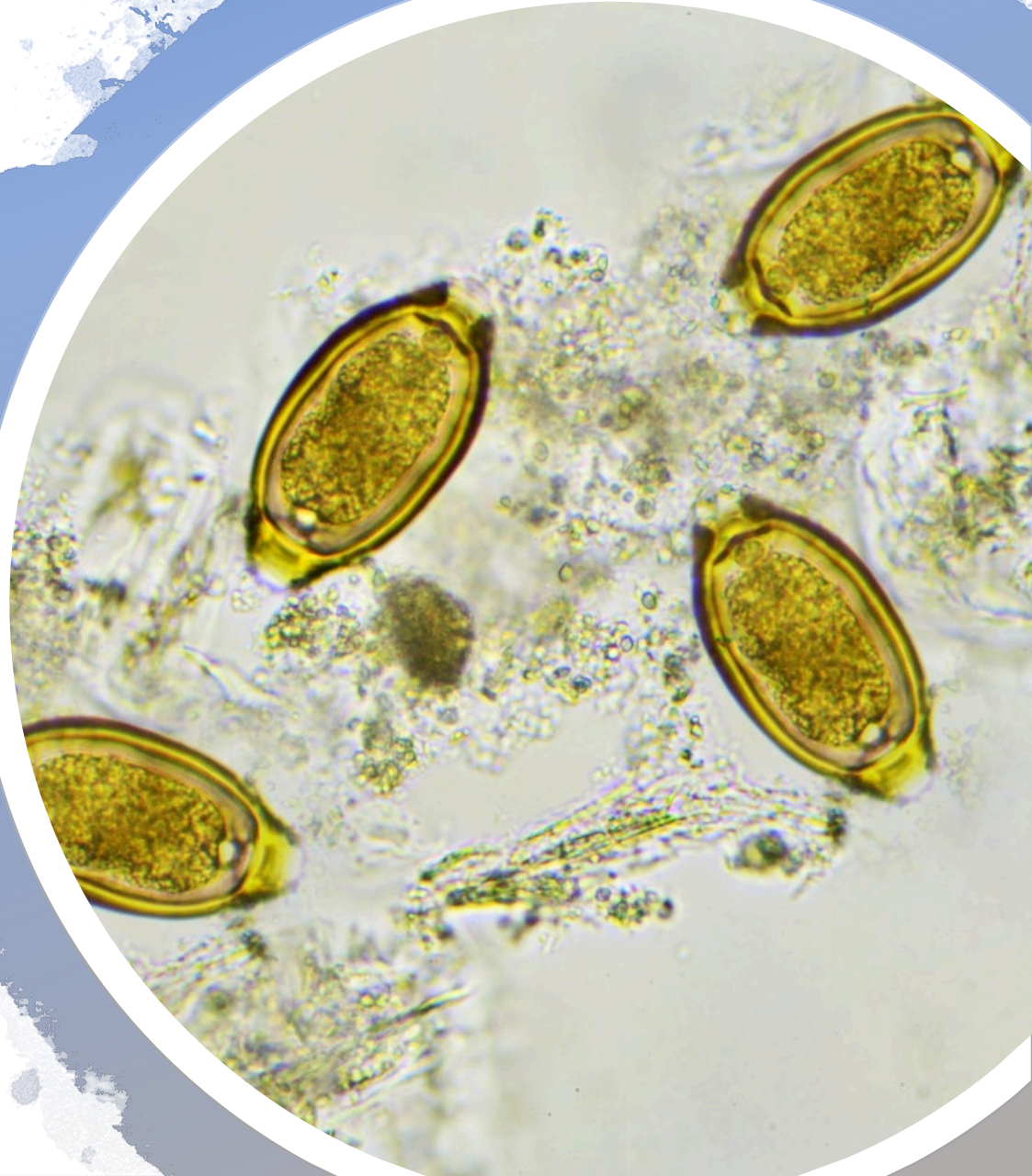
# Whipworms

**Host:** Dogs

**Zoonosis potential:** None

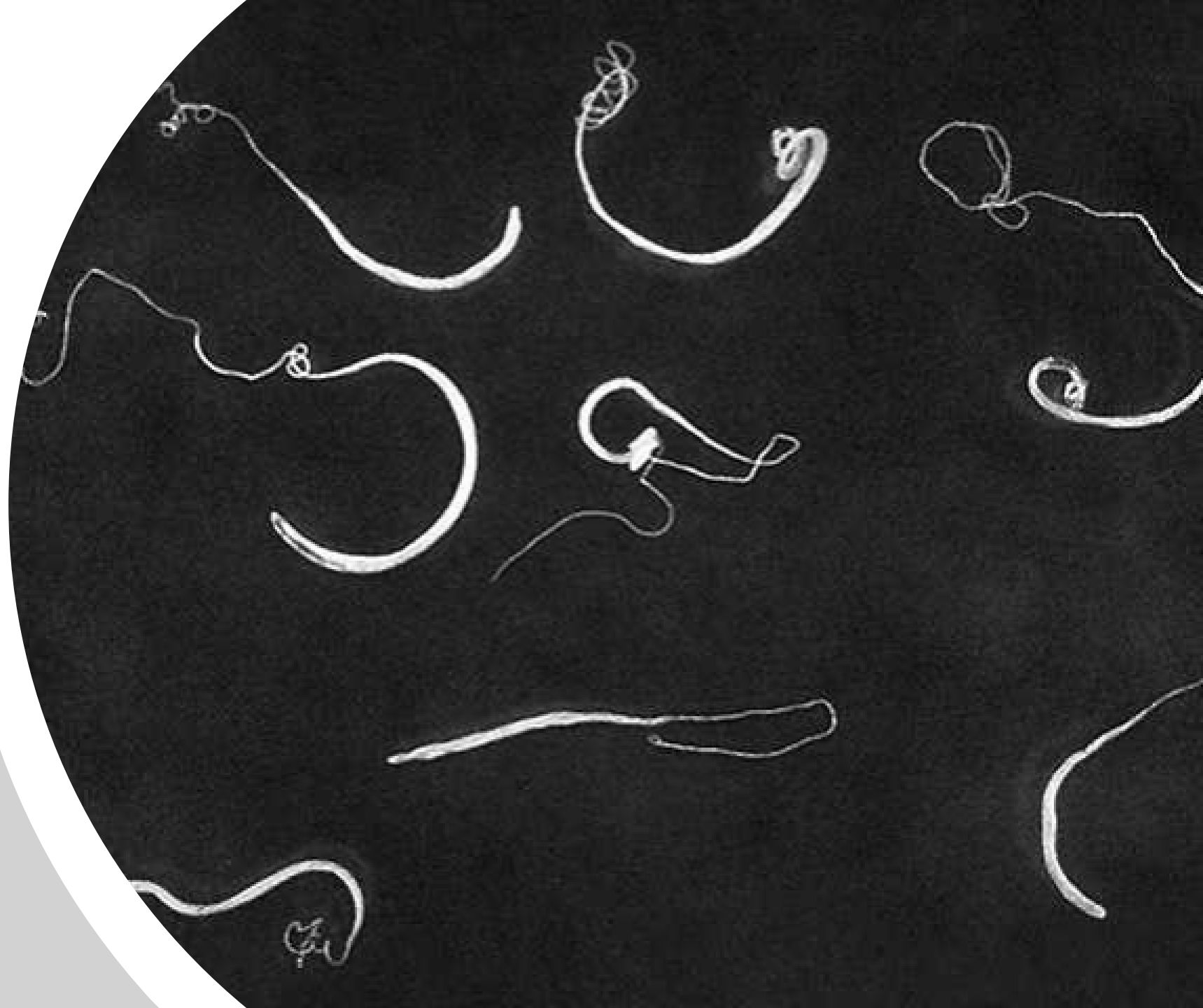
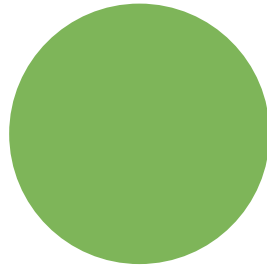
**Signs:** Diarrhea that may appear dark brown and tarry

- More common in adult dogs. Adult worms live in the large intestine of its host and eggs are shed in the feces.
- Once a dog becomes infected, it will take 3 months for eggs to be detected in a fecal sample.
- Eggs are resistant and can accumulate in the environment easily



# You can't see us, but we still exist!

Adult whipworms are so small you can't see them with your naked eye. Their eggs are very resilient and live in the soil through even the harshest conditions. Florida summers are no match for these parasites!





# Tapeworms

**Host:** Dogs and cats

**Zoonosis potential:** Rare (must ingest intermediate host)

**Signs:** Visualization of proglottids (eggs) in stool



- More common in adult dogs and cats. Adult worms live in the small intestine of its host and proglottids are shed in the feces.
- Once a pet becomes infected, it will take 2-3 weeks for proglottids to be detected in a fecal sample.
- Fleas are the intermediate host, without them the lifecycle cannot continue

# Is that rice?



This is an adult tapeworm. They are made up of segments called proglottids. Each proglottid contains eggs that are passed through feces which are visible to the naked eye. They will look like grains of rice. Fleas consume these eggs allowing them to hatch and larvae to form. Dogs and cats ingest the infected flea allowing the tapeworm larvae to mature into an adult in the small intestine and the lifecycle to start over.

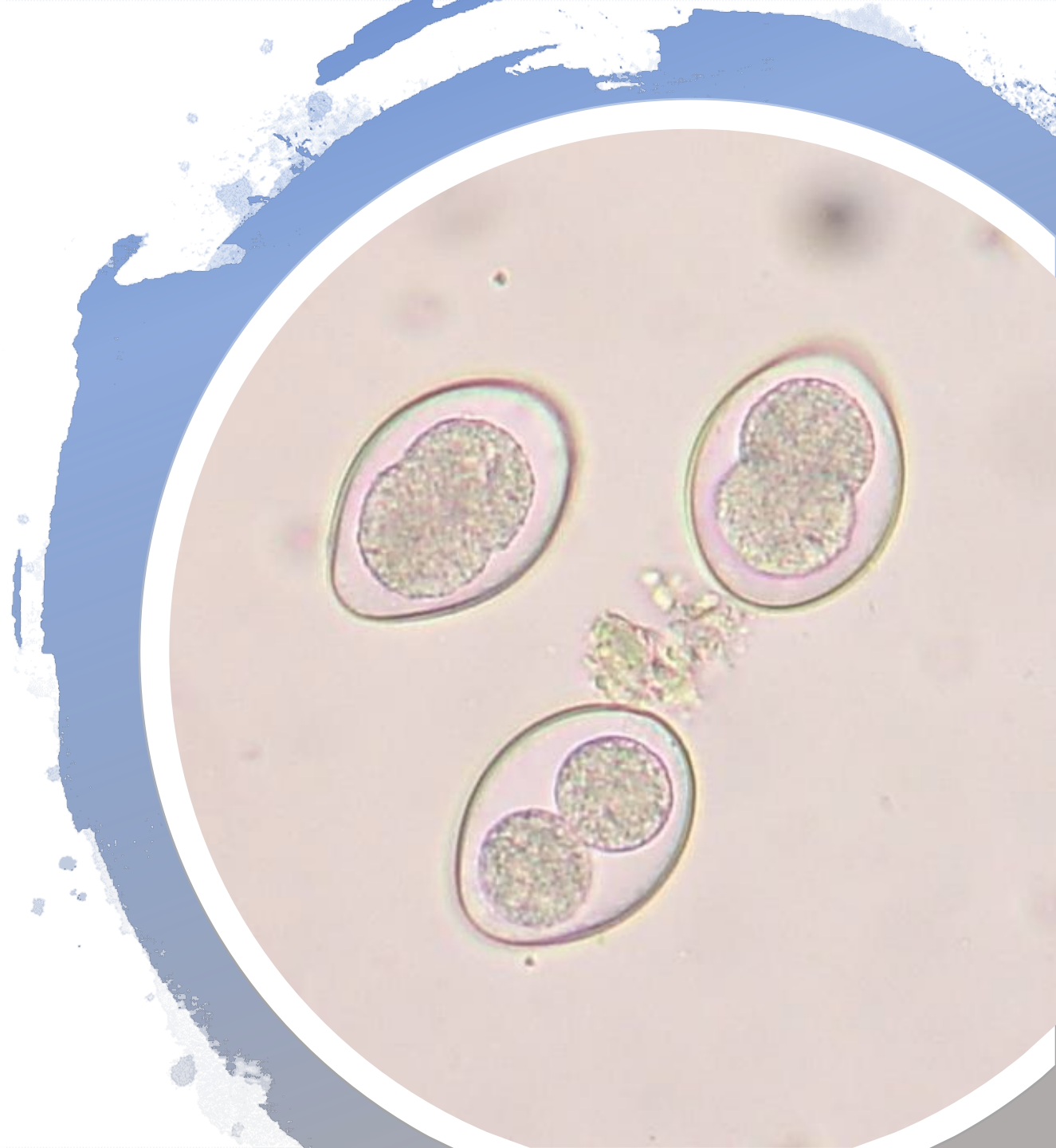
# Coccidia

**Host:** Dogs and cats

**Zoonosis potential:** None

**Signs:** Diarrhea, weight loss, and dehydration

- More common in puppies and kittens. Mature oocysts (eggs) live in the small intestine of its host.
- Once a pet becomes infected, it will take 7-14 days for oocysts to be detected in a fecal sample.
- Transmission usually occurs with ingestion of infective oocyst. However, ingestion of a transport host, such as mice or insects, may cause infection.



# Intestinal Parasite Screen



Not only does an intestinal parasite screen confirm the presence of a certain parasites (worms), but also gives us valuable information in healthy pets.

An intestinal parasite screen also scans for the health of the intestines. This test can also confirm the presence of excess bacteria in the bowels.

This test can be run in house within 10 minutes or be included with our early detection health screen at our outside lab, IDEXX.



- **Heartgard** not only treats heartworms, it also treats hookworm and roundworm infestations.
- **Nexgard** not only treats flea and tick infestations, it also helps prevent tapeworm infestations.

Did you know your monthly preventions of **Heartgard** and **Nexgard** also contain deworming agents?

# Don't Forget!!

Purchase 6 months  
of Nexgard and  
receive one dose  
**FREE!**

That's 7 months of  
protection for the  
price of 6!



\*One coupon per household.

# Our feline friends need monthly protection and deworming too, and we've got them covered.

Revolution PLUS is a topical application that protects against various kinds of infestations



# BEWARE!



Can you spot the difference?

Online pharmacies are popular for their extremely low prices. But what they don't tell you is that these "products" may look like the real deal but in fact can be something else.

Get your products from a trusted source!





### Crosswinds Veterinary Hospital

Crosswinds Veterinary Hospital is a companion-animal veterinary hospital that was founded to provide exceptional veterinary care to the St. John's and Jacksonville communities.

At Crosswinds Veterinary Hospital, we have your pet's best interests at heart. Our vision is to create a relationship-based clinic in which you become a part of a team tailored to best meet you and your pet's needs. We want every pet owner to feel that they play an active role in their pet's health, and we therefore take the time to provide personalized care along with interactive client education.

We want you to feel that you and your pet are part of our team- a team dedicated to ensuring that the best steps are taken for your pet and that the medicine we recommend is of highest quality and works best with your lifestyle.



#### Our Location

71 Doctor's Village Drive  
St. John's, Florida 32259  
Phone: (904) 671-0310

#### Hours of Operation

Now Open!  
Mon - Fri: 8:00am - 5pm  
Closed: 12:30 - 1:30 (Lunch)

#### Crosswinds Pet Portal



#### Online Pharmacy



**If you like the convenience of items being shipped to your home, you can use our trusted online pharmacy!**



# A CROSSWINDS SUCCESS STORY!



Meet Sammy! Sammy was brought to us by one of our clients who found him all alone. He was malnourished, suffering from a heavy burden of coccidia, sarcopitc mange, and ringworm (a fungal skin infection). Sammy's new dad never gave up hope! After multiple medicated baths and dips, oral medications, vitamins, and plenty of TLC, Sammy was finally given a clean bill of health! Sammy is now a happy, healthy little kitten who is settling into his new home.