



It's summertime in Florida which means fun in the sun! But don't forget that extra heat and sun exposure can lead to serious complications for your pets. Let us help you keep your pets protected all summer long!

HEAT PET SAFETY!

www.DVMmultimedia.com  DVMmultimedia™



SHADE & WATER

Protect your pets from the sun's rays and keep them hydrated.



NO CARS

Never leave a pet in the car, not even with the window cracked.



HEAT STROKE

Excessive panting, discolored gums, and mobility problems are signs. Seek veterinary attention immediately!



NO ASPHALT

If it's too hot for bare feet, it's too hot for bare paws.



LIMIT EXERCISE

Don't let playful pets over exert themselves in the heat.

Heat stroke in animals can happen quickly! All pets are at risk, but certain breeds including **English** and **French bulldogs, Boston terriers,** and **Pugs** tend to be more susceptible due to their shortened noses.

Always keep a close eye on your pets when they are outside and watch for potential signs of heat stroke including:

- Excessive panting/drooling
- Discolored gums and tongue
- Altered or confused appearance
- Vomiting
- Seizures
- Weakness or collapse

Heat stroke is easier to prevent than treat! Be sure to:

- Keep your pets in shaded areas
- Avoid long walks during the hottest hours of the day
- Always have clean water readily available
- Never leave pets in hot cars

Remember to call the office as soon as possible if you suspect heat stroke.

HOW TO TREAT (AND POSSIBLY SAVE!) OVERHEATED DOG



Watch your pooch for signs of overheating during the hot weather.

1

Move your pet to a cooler area immediately, preferably with a fan.

2

Take your pet's temperature using a rectal thermometer.

3

Put cool, wet towels on

- neck,
- armpits
- between legs
- wet ear flaps and paw pads

4

Give your dog fresh cool drinking water.

5

Transport your pet to your vet right away!



With hurricanes comes heavy flooding. Heavy rain can bring about all kinds of diseases, parasites and more from the infected soil into moving or standing water.

Leptospirosis, a bacterial virus stemming from infected urine of wildlife, can be present in pooled water sources such as ponds, puddles and floods. This virus can affect our pets in a dangerous way and can be contracted in humans as well.

To keep you, your family and pets safe there is a vaccine that we administer to dogs to combat **Leptospirosis**.

The adventures of Mac and Cheeze!

And the curious case of Leptospirosis

Florida.....Mac
and Cheeze
stare out the
window in
hopes the
stormy
weather will
clear up soon
so they can get
out and play!





Hooray!

The rain has stopped,
and the sun is shining
brightly!

Mac and Cheeze are
going to venture out
and see what mischief
they can get into!

But...could

leptospirosis be
lurking about?

“A puddle, I can’t wait to jump in!”
Yells Mac.

“Halt!”
warns Cheeze.

“Do not enter that body of water! It just rained and this puddle could contain Leptospirosis!
Are you vaccinated Mac?”





“Does it really matter,
Ceeze? Ask Mac”

“Yes Mac! After heavy rain,
Leptospirosis can
contaminate any body of
water, even small puddles. It
is passed through wildlife
urine and can stay in the
environment for months.
That’s why there is a vaccine
to help protect dogs from
getting it.” Ceeze explains
to Mac



“Well what about you Cheez? Do you
get leptospirosis vaccine?” asks Mac

“No Mac it’s unlikely for
cats to get Lepto through
bodies of water, so we
don’t get vaccinated”
Cheez states



Mac's owner schedule an appointment for a Leptospirosis vaccine

Now if Mac comes by and the puddle in the unfortunate circumstances of a hurricane or flood, she will be protected

Take that Leptospirosis!

*Inquire today to see if your dog is at risk for Leptospirosis based on his or her lifestyle

LEPTO IS OUT THERE. ARE YOUR PATIENTS READY?

Any dog, any breed, any lifestyle is susceptible to leptospirosis



Most dogs spend time outside every day

Regardless of the area – metro, suburban or rural – transmission can occur when a dog spends just a few minutes outside, and the average dog walk is 17 minutes! Plus, the number of potential carriers and places where infection can occur is in the billions.

How do you protect your patients?

Duramune®, LeptoVax® 4 and ULTRA™ vaccines

Elanco

Duramune®
Keep dogs safe.

Be like Mac and be
protected!

Many bodies of water and
animals carry
Leptospirosis.

Keep your pet protected
with an annual
Leptospirosis vaccination.

Is your dog at risk?

Take this survey and find out! Ask a staff member if you have any questions

ASSESS YOUR DOG'S RISK OF LEPTOSPIROSIS

Does my dog really need to be vaccinated against leptospirosis?

Take this survey to find out your dog's risk of getting leptospirosis. Check either **YES** or **NO**.

- 1** Does your dog have access to wetland areas such as swamps, marshes, streams, lakes, rivers, drainage ditches, or sources of slow-moving or stagnant water? YES NO
- 2** Does your dog roam rural fields, woodlands, suburban parks, or new housing developments where wildlife such as deer, raccoons, opossums, skunks, and other animals may be present? YES NO
- 3** Does your dog live in an urban environment and walk through puddles or areas of pooling water after it rains? YES NO
- 4** Does your dog live in an area that experiences heavy rainfall or frequent flooding? YES NO



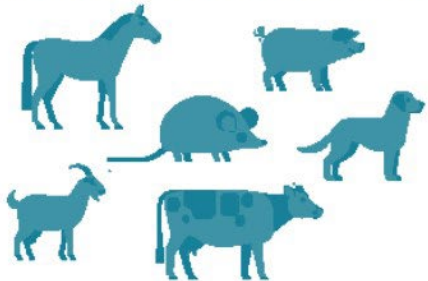
Share your answers with your veterinarian.

If you answered YES to any of the above questions, your dog may have a higher risk of infection and may benefit from vaccination against leptospirosis.

Protect Yourself from Leptospirosis

After the Storm

Leptospirosis is a bacterial disease that can increase after hurricanes or floods when people may have to wade through contaminated water or use it for drinking or bathing.



People can get leptospirosis when they have contact with:

- urine from infected animals, which can include rodents, dogs, livestock, pigs, and wildlife.
- floodwater, freshwater like rivers or streams, unsafe tap water, wet soil, or food contaminated with the urine of infected animals.

The bacteria can enter the body through cuts or scratches or through the eyes, nose, or mouth.

Prevent It



Do not wade, swim, bathe, or put your head in, or swallow floodwater or any fresh water source that may be contaminated by floodwater or animal urine.



Cover cuts or scratches with waterproof bandages or other coverings that seal out water.



Do not walk outside barefoot. Wear waterproof protective clothing, gloves, closed shoes, or boots near water or wet soil that may be contaminated by animal urine or floodwater.



Treat potentially contaminated water to make it safe for drinking by boiling or chemically treating.



Prevent rodent infestation by keeping food and trash in closed containers and trapping rodents.

Learn the Symptoms

Flu-like symptoms

Headaches

Muscle aches

Fever and chills

Skin rash



Conjunctivitis (red eyes)

Cough

Stomach pain, vomiting, and diarrhea

Yellowing of the skin and eyes

Remember!

Leptospirosis is a ZOO NOTIC disease, which means humans can get it too! Stay informed and stay safe!

Dogs provide an ideal environment on which adult fleas can feed and lay eggs.



Adult Fleas

Fleas feed on the dog's blood, which irritates the dog, potentially causing allergic dermatitis (FAD). Fleas reproduce quickly to infest the owner's home.



Eggs

Flea eggs fall off the dog and end up throughout the owner's home, particularly where dogs spend the most time.



Pupae

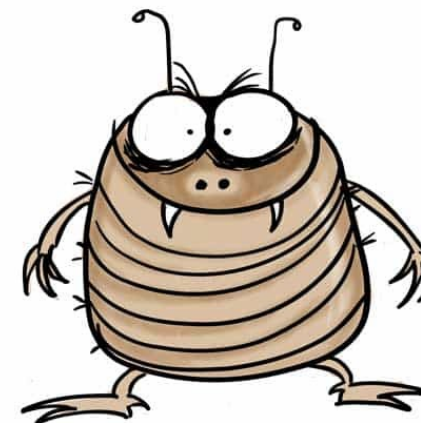
Pupae are enveloped by a debris-coated silk-like fiber and can lay dormant before emerging as hungry adult fleas.



Larvae

Larvae hatch in several days and feed on adult flea feces or organic debris in the environment.

**It's flea season,
with the extra
rain and
humidity the
fleas are biting
more than ever
this time of the
year!**



And adult fleas are just the tip of the iceberg...



Did you know?

- Pupae (immature fleas) can stay in their cocoons for up to 1 year!
- Female fleas can lay up to 50 eggs a day.
- Fleas can transmit zoonotic diseases (which means us humans can get these diseases).
- Fleas are carriers for tapeworms.
- In severe infestations, fleas can cause anemia.
- Fleas prefer humid environments (Florida).

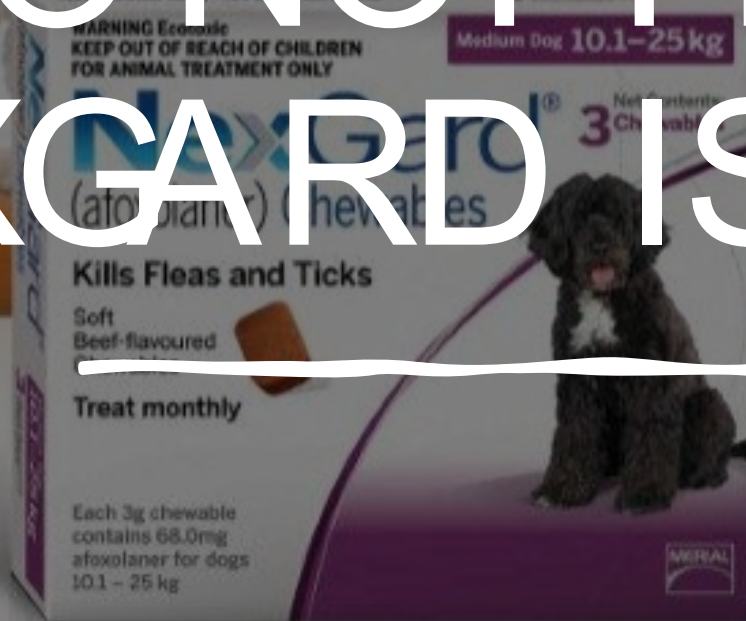
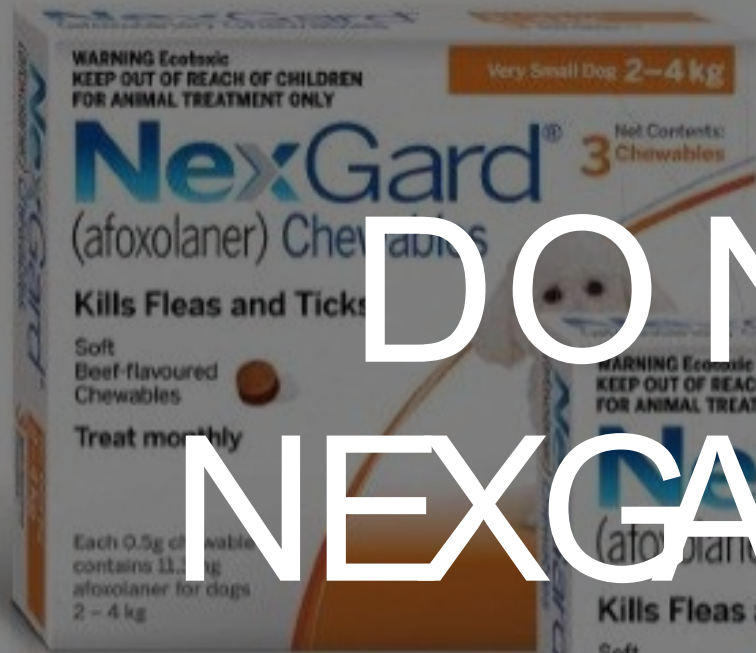
Are you seeing adult fleas on your pets?

- Well you are only seeing 5% of that flea population
- Eggs make up more than 50% of fleas within your environment!



Very Small Dog: 2-4kg

Small Dog: 4.1-10kg



Medium Dog: 10.1-25kg

Large Dog: 25.1-50kg

DO NOT FEAR-
NEXGARD IS HERE!